

A Guide to Transfer Station fees and recycling

Waitomo District Council provides a range of waste management services to the community, including five Waste Transfer Stations located at Marokopa, Kinohaku, Piopio, Benneydale and Mokau.

Transfer Station Disposal fees

Charges are per refuse item: Van (each). If the amount of general refuse is over and above the standard item, additional charges will be applied.

| | |
|-------------------------------------|---------|
| Disposal of unofficial rubbish bags | \$5.00 |
| Wheelie Bin | \$37.00 |
| Car boot | \$40.00 |
| Van | \$70.00 |
| Ute | \$80.00 |
| Trailer | \$80.00 |
| Special Refuse (e.g. Whiteware) | \$35.00 |
| Televisions – each | \$24.00 |
| Computer – each | \$21.00 |
| Household kitchen appliances | \$9.00 |

You can recycle the following:

Plastic (types 1, 2 and 5)

Any plastics types 1, 2 and 5 will be accepted for recycling.

This can include soft drink bottles, milk bottles, ice cream containers and food packets such as biscuit trays or salad domes.

Remove the lids from all containers. Rinse all items thoroughly in warm water. Flatten as much as possible. These can be placed in the plastic collection containers at all Transfer Stations.

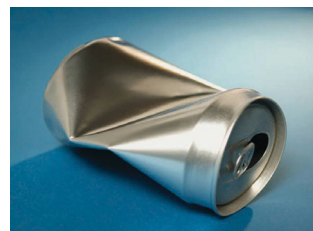


Remember, not all plastic items are types 1, 2 and 5. The recycling number is printed on the underside of the bottle/container.

Plastic items such as icecream containers and milk bottle lids cannot be re-used but can make great craft materials.

Tin and Aluminium Cans

Tin and aluminium cans will be accepted at all Transfer Stations.



Paper and cardboard

- Newspapers
- Household paper and card
- Packaging cardboard
- Food boxes, ie: cereal boxes
- Egg cartons and trays
- Corrugated cardboard



Do not include paper items that have food contamination, ie: fish and chip wrappers...

Large amounts of cardboard can be recycled at the Waitomo District Landfill for free.

Glass

The Transfer Stations will accept glass bottles and jars. This includes clear, green and brown coloured glass.

DO NOT INCLUDE: light bulbs, glass plates or bowls, drinking or beer handles, ash trays, or broken glass.



Broken glass must be well wrapped in newspaper and put in a WDC Rubbish Bag.

www.waitomo.govt.nz

0800 WDC Help
(0800 932 4357)

Email: info@waitomo.govt.nz

Waitomo District Landfill

Located on
William Street, Te Kuiti
Phone: 07 878 1137

| Day | Opening Hours |
|------------------|-----------------|
| Mon/Tue/Thu: | CLOSED |
| Wed/Fri/Sat/Sun: | 9.00am - 4.00pm |
| Public Holidays: | CLOSED |
| Christmas Day: | CLOSED |
| Good Friday: | CLOSED |

Waitomo District Council
encourages every household to
undertake recycling to help reduce
the amount of recyclable waste being
sent to landfill.



*A Guide to Transfer Station fees and recycling is bought
to you by Waitomo District Council, promoting Waste
Minimisation.
Last updated July 2024*

Waitomo District Transfer Stations

The transfer stations are manned when open to
ensure maximum recycling is achieved.

Solid waste transfer station opening times are:

| Transfer Station | Opening Hours |
|---|---|
| Awakino/Mokau on Manganui Road, Awakino | Sun 9am - 1pm |
| Kinohaku on Harbour Road | Mon 9am - 1pm Sun 1pm - 5pm |
| Benneydale on Mine Road | Mon 9am - 1pm Sun 1am - 5pm |
| Piopio on Kahuwera Road | Mon 9am - 1pm Sat 9am - 1pm Sun 1am - 5pm |
| Marokopa on Marokopa Road | Sat 9am - 1pm Sun 9am - 1pm |



A Guide to Transfer Station fees and recycling

