

Statement of Proposal

(Including Summary of Information)

Review of the Local Electoral Representation Arrangements 2019 Local Elections

Statement of Proposal

Review of the Local Electoral Representation Arrangements

2010 Local Elections

WHY THE REVIEW?

The Local Electoral Act 2001 (the Act) requires that Council review its representation arrangements at least every six years. Council last reviewed the arrangements for representation for the 2013 Election and is therefore required to review the representation arrangements for the 2019 Election.

WHAT DOES THE REVIEW REQUIRE?

The Act sets out the requirements for representation reviews which must include:

- The number of elected members.
- Whether the elected members (other than the Mayor) shall be elected by the entire district, or whether the district will be divided into wards for electoral purposes, or whether there will be a mix of 'at large' and 'ward' representation.
- If election by wards is preferred, then the boundaries and names of those wards and the number of members that will represent each ward.
- Whether to have community boards and if so how many, their boundaries and membership and whether to subdivide a community for electoral purposes.

RELATED PROCESSES

In addition to the above, councils and communities also have the opportunity to consider the electoral system to be used for the elections, i.e. either first past the post or single transferable vote, and the establishment of Māori Wards or constituencies.

ELECTORAL SYSTEMS

Council resolved not to change the electoral system for the 2019 election and is therefore bound to continue with First Past the Post for the 2019 election.

MĀORI WARDS

The Act also defines timelines in which Council must make resolutions for changes in representation arrangements relating to Māori Wards.

Council made no resolution to change Māori representation for the 2019 election.



What is Council's proposal?

Council's proposal is that there be no change to the current representation arrangements, i.e.

- Six elected members elected by wards, plus the Mayor elected at large
- Two Wards:
 - » Urban Ward (3 elected members)
 - » Rural Ward (3 elected members)
- No Community Boards

NUMBER OF ELECTED MEMBERS

Council proposes **no change** to the number of elected members for the 2019 election, i.e. Mayor (elected at large) and six elected members, three elected from each ward.

In determining the membership of wards and to ensure that fair representation of electors in each ward is achieved, the Act requires compliance with a member to population ratio referred to as the "+/-10% rule".

This rule provides that the population of each ward, divided by the number of members to be elected by the ward, produces a figure no more than 10% greater or smaller than the population of the district, divided by the total number of elected members (other than the mayor).

Using Statistics New Zealand normal resident population estimates for the Waitomo District based on 2013 Census, three elected members per ward (excluding the Mayor elected at large) means that each ward must have a population per member that is no more than +/-10% of 1,485 (the whole population of 8,910 divided by six members = 1,485). The +/-10% deviation per Member for six members is 1,337 to 1,634. The table below shows Council's proposal complying with this requirement.

Ward	Estimated Population	Elected Members Proposed	Population per Elected Member
Rural	4,689	3	1,563
Urban	4,221	3	1,406
Whole District	8,910	6	1,485

Council is not proposing to make any changes to the number of elected members.

WARDS

Council proposes **no change** to the current wards, being an Urban Ward and a Rural Ward as detailed in the diagram on the following page.

Council is not proposing to make any changes to the current wards.

COMMUNITY BOARDS

Council proposes **no change** to the current arrangement, i.e. no community boards are proposed.

Council is not proposing to make any changes relating to community boards.

If you would like to make a submission on this issue, just fill out the submission form and post, email, fax or deliver it back to Council by **4.00pm on Monday October 8, 2018**.

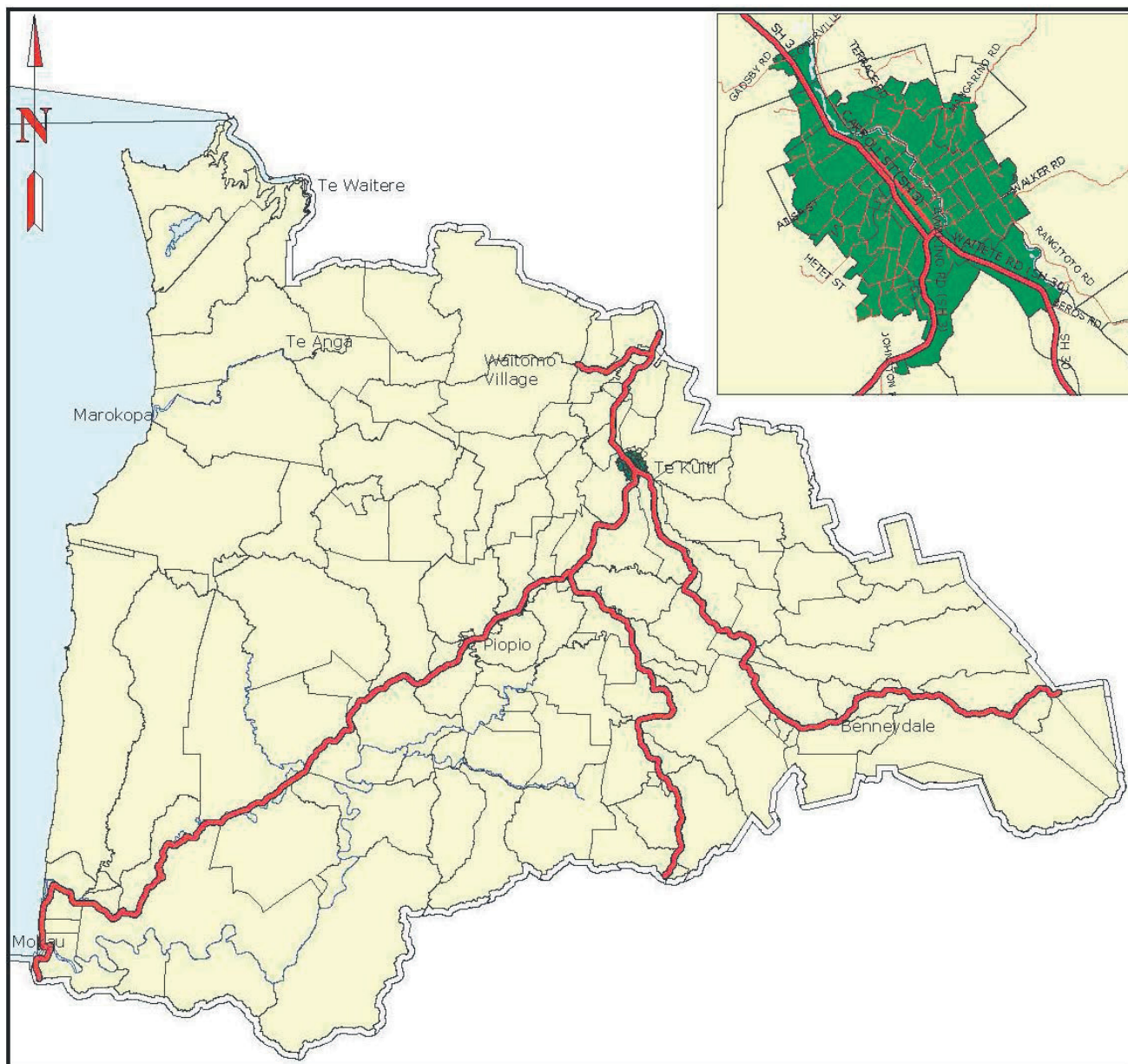
If you want to talk to Council about your submission then let us know on the submission form. The hearing will be held in the Waitomo District Council Chambers. We will notify all interested parties of the date and time.

Post: Representation Review, Waitomo District Council, Freepost 112498, PO Box 404, TE KUITI 3941.

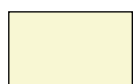
Email: consultation@waitomo.govt.nz

Fax: 07 878 7771

MAP:



Waitomo Rural Ward



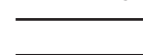
- Population 4,689
- 3 Councillors
- No community board

Te Kuiti Urban Ward



- Population 4,221
- 3 Councillors
- No community board

Meshblock Boundaries at January 2009



Census data from Statistics NZ 2013

*A mesh block is the smallest geographic area used by Statistics New Zealand. They are also the principal unit used to draw up and define electoral district and local authority boundaries. **An area unit is a collective of mesh blocks with a unique name. Area units either define or combine to define urban areas, rural centres, statistical areas, territorial authorities and regional councils.

Submission Form

Review of the Local Electoral Representation Arrangements 2019 Local Elections

Council welcomes your feedback on the Review of the Local Electoral Representation Arrangement 2019 Local Elections.

Tell us what you think!

Name:

Address:

Phone:

Email:

I/We wish to be heard in support of my submission (circle one): YES / NO

Post: Representation Review,
 Waitomo District Council,
 Freepost 112498,
 PO Box 404,
 TE KUITI 3941.

Email: consultation@waitomo.govt.nz
Fax: 07 878 7771

Please return your completed Submission to Council (using our freepost address). Or drop it into the WDC Office, Queen Street Te Kuiti. If you need to use extra pages, include your name on each page and attach them to this form.

Please note: Submissions close at 4pm on Monday October 8, 2018. Submissions received after this date and time will not be accepted.

MY SUBMISSION IS:

.

.

.

.

.

.

.

.

.

.

.