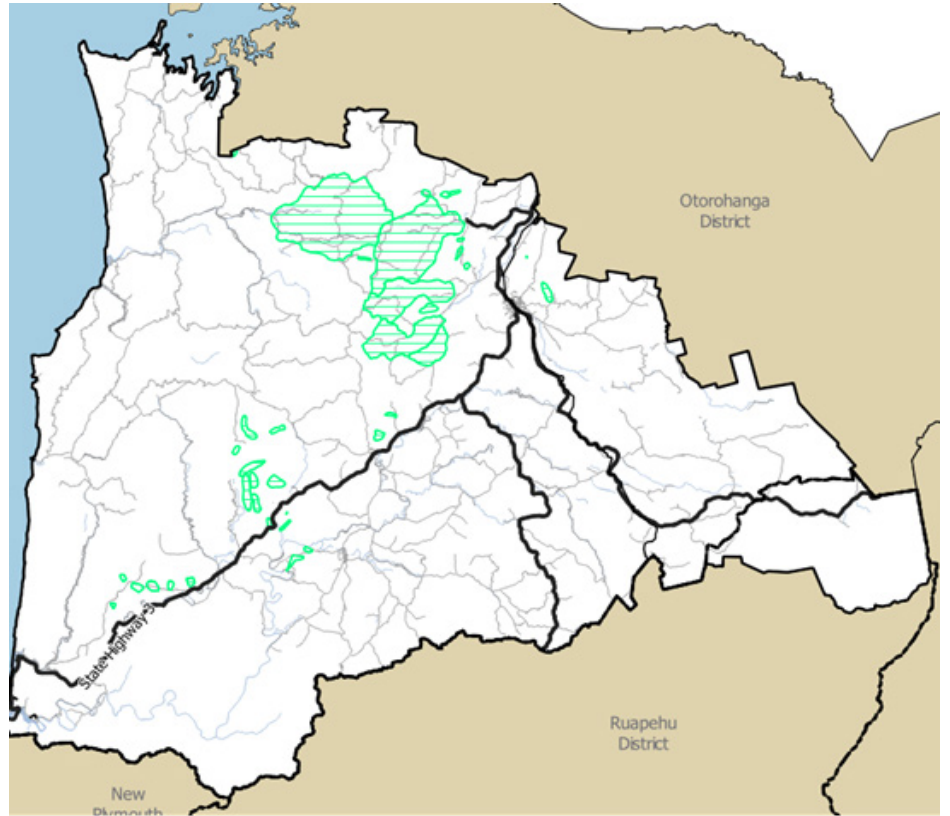


KARST OVERLAY

This colour and pattern identifies the Karst Overlay on the Planning Maps

Waitomo is internationally known for its incredible limestone cave formations and karst systems. These unique features can be damaged by land use above ground so it's important we manage activities that increase water percolation rates or damage water quality. To do this we have identified a karst overlay and propose some rules to manage some types of land use.



How has the Karst Overlay been identified?

Council contracted a leading New Zealand geologist to identify the areas. Within the proposed karst overlay there are 31 cave systems and 5 water catchment areas, shown as green horizontal lines on the map below.

You can use the **Draft DP Snapshot tool** to find out if your property is in the karst overlay.

What are the differences proposed between the current and the draft district plans?

- While the catchment areas are new, most of the cave systems are already mapped in the current district plan and are subject to land use rules
- The new plan is simpler - the caves are not divided into categories and there is one set of rules
- Generally, the rules of the underlying zone apply in the new plan
- However rules about earthworks, vegetation clearance, plantation forestry, setbacks and restricting the placement of fill or rubbish in caves or sink holes have been rolled over into the new plan with some amendments

Please note this factsheet is a summary and does not include the full set of rules. You can read the full set of rules [here](#)

The draft rules we are looking at are:

- There are no restrictions on building in the karst overlay – the rules of the underlying zone apply
- Earthworks or farm quarries disturbing volumes greater than 250m³ per holding per calendar will need a resource consent. Large commercial quarries are not appropriate within the karst overlay
- You must not do earthworks or vegetation clearance (except to clear pest species or wilding pines) within 20m of a cave entrance or sinkhole
- New plantation forestry will need a resource consent. Harvesting of existing forestry doesn't need a consent for small amounts of clear felling, but the trees must be replanted within 12 months
- Continuous cover forestry, sustainable forest management and sustainable harvesting is permitted
- Clearing areas of indigenous vegetation greater than 5,000m² per holding per calendar will need a resource consent, but if the vegetation is in a Significant Natural Area then other rules apply. Click [here](#) to read the fact sheet on Significant Natural Areas
- Structures within a cave, modifications to cave features or activities on the surface of water underground (eg: blackwater rafting) will need a resource consent