

Safety barriers now complete

SKATE Park users in Te Kuiti are now unable to simply 'jump' across the nearby rail corridor.

Waitomo District Council recently erected a line of robust safety barriers stopping all access from the Carroll St skate park onto the main trunk line which is a popular shortcut into the centre of Te Kuiti.

Completed last week at a cost of \$23,000, the barriers are part of the council's ongoing public safety project initiated in response to the death of a Te Kuiti teenager who was hit and killed by a train while crossing the tracks in October.

The project, in partnership with KiwiRail, includes more than 1500m of safety fencing along the Rora St side of the main trunk line from the i-SITE building to the northern end of town where the track goes over the Mangaokewa Stream.

The cost of the Rora St barriers, shared 50/50 with KiwiRail, came to \$70,000 and was completed in May.

Waitomo District Council community service group manager John De Luca says safety is paramount espe-

cially when it comes to local residents illegally crossing the tracks.

"A new perimeter barrier has been put in place around the Te Kuiti Skate Park in an effort to secure the property and deter people from mounting the fence to get access to the railway corridor – which is the property of KiwiRail," he says.

"As large sections of the fence had been vandalised over a period of time, the decision was taken to replace the fence with a more robust barrier.

"The specification of the fence is intended to act as a deterrent to stop people from crossing over on to KiwiRail property and crossing the railway tracks.

"We encourage pedestrians to use the designated crossings and the pedestrian overbridge which is the safest way to travel from Carroll Street to Rora Street."

The final stage of the corridor safety project, in partnership with Te Kuiti Development Inc, will be upgrading the overbridge to make it more accessible and user-friendly for pedestrians.



OVERVIEW: Police Constable Peter Olsson supports Waitomo District Council's recent upgrade of the safety barriers around the Carroll St Skate Park in Te Kuiti.

IN BRIEF

\$1.821b for Waikato roads

UNLOCKING economic growth, reducing travel time between Auckland and Cambridge and improving safety is the focus of a \$1.821 billion investment into the Waikato's transport network announced by the NZ Transport Agency on Tuesday.

More than half will target continued economic productivity and growth, fast-tracking the completion of the Waikato Expressway and projects such as the

Hamilton Ring Road, while about \$400m will be spent improving safety.

The total is the Waikato's share of the \$13.9 billion National Land Transport Programme – a partnership between local authorities who invest funding on behalf of local communities and the NZ Transport Agency which invests national funding from petrol taxes, road user charges and vehicle registration and licensing fees through the National Land Transport Fund (NLTF).

WORK TOGETHER to protect people and the network



Trees close to power lines can be a danger to the public and can cause interruptions to the power supply especially during high winds and storms.

Branches that come into contact with lines can produce power outages and fires. If the line breaks the fallen live line could electrocute people or livestock. Serious injury or death can occur if a person comes into contact with power lines while climbing or pruning trees near the lines. For all these reasons trees need to be kept well clear of power lines.

You can help reduce the risk to others and prevent damage to the network by keeping up maintenance on any trees on your property that are near power lines.

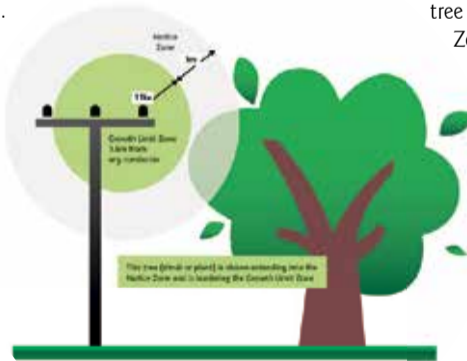
REGULATIONS TO KEEP PEOPLE AND LINES SAFE

The Electricity (Hazards from Trees) Regulations 2003 were introduced to keep trees a safe distance from power lines. The following information provides an overview of how the regulations work and what they mean for you. Specific information will be provided to tree owners prior to us undertaking any work under the regulations.

A "Growth Limit Zone" defines the distance that trees growing on private property must be kept away from electricity lines. Trees inside the growth limit zone must be trimmed to at least that distance. In certain cases the first cut or trim of trees in the Growth Limit Zone will be undertaken and paid for by The Lines Company.

GROWTH LIMIT ZONES

Trees must be kept the following distances from any line conductor
(For spans up to 150m):
Voltage: 230/400v = 0.5m
11kV = 1.6m
33kV = 2.5m



The distance is greater for spans over 150 metres. Please contact us if in doubt.

If a tree is within the above distance it must be trimmed back to the Notice Zone, which is 1 metre beyond the growth limit zone. The tree owner is always responsible for keeping their trees outside the growth limit zone. However, in some cases (normally where the tree is self grown), you can declare 'no interest' in the tree and we will take responsibility for keeping the tree clear. In such instances we will probably opt to fell the tree to save further maintenance costs.

CUT OR TRIM NOTICE

We will issue a Cut or Trim Notice to the tree owner if we become aware that a tree is encroaching the Growth Limit Zone, and we require the tree owner to trim the tree. A Cut or Trim Notice will include contact details for approved contractors, time limits to be met and the need to advise the company before the tree is cut or trimmed in case power needs to be disconnected or any other steps that are required to protect the supply of power and ensure safety.

Tree owners are responsible for keeping their trees away from lines.

However, for safety reasons, only qualified tree trimmers should trim any tree near power lines. Serious injury or death can occur if a person, or the equipment being used comes into contact with electricity lines. For safety's sake you must use a qualified professional.

If you have any queries about tree management, if you would like to notify us of any trees that may present a danger to the network or if you would like to discuss any issues in relation to trees please call us on **0800 FOR LINES (0800 367 546)** Option 3 and we'll be pleased to help.

www.hrfisken.co.nz

"LIVE WEIGHT GAIN FOR A VERY PALATABLE PRICE"

CALF PRO PLUS 20.5% PROTEIN WITH BOVATEC | Formulated to help prevent Scours. Premium palatability.

CALF PLUS 16% PROTEIN WITH BOVATEC | Formulated to help prevent Scours. Builds live weight gain fast.

CALF MEAL 16% PROTEIN | Builds live weight gain fast.

AVAILABLE IN 25KG BAGS OR 500KG BULK BAGS



HR FISKEN & SONS LTD.
SUPERIOR STOCKFOOD SINCE 1957

TO ORDER CALL SORENSEN
[07] 878 8276