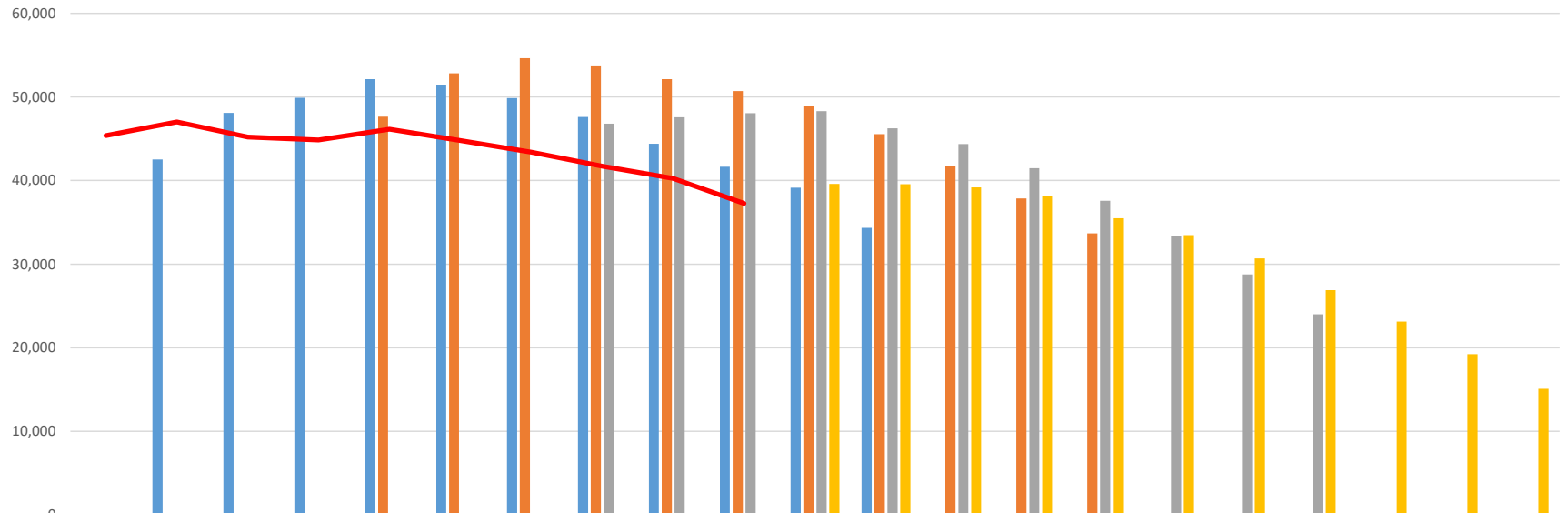


Public Debt LTP/10YP Forecasts and Actual



	2011	2012	2013	2014	2015	2016	2017	2018	2019	2020	2021	2022	2023	2024	2025	2026	2027	2028	2029	2030	2031		
LTP 2012-22		42,505	48,086	49,890	52,120	51,455	49,866	47,600	44,390	41,641	39,148	34,342											
LTP 2015-25					47,657	52,834	54,628	53,645	52,131	50,676	48,916	45,549	41,739	37,842	33,651								
LTP 2018-28								46,792	47,565	48,073	48,317	46,250	44,363	41,453	37,586	33,319	28,773	23,997					
10YP 2021-31											39,614	39,545	39,158	38,145	35,486	33,468	30,689	26,911	23,124	19,237	15,113		
Actual	45,372	47,005	45,182	44,865	46,139	44,786	43,419	41,737	40,261	37,260													

■ LTP 2012-22   
 ■ LTP 2015-25   
 ■ LTP 2018-28   
 ■ 10YP 2021-31   
 — Actual