

# Kerbside Recycling Collection Guide

## Plastic Types 1, 2 & 5

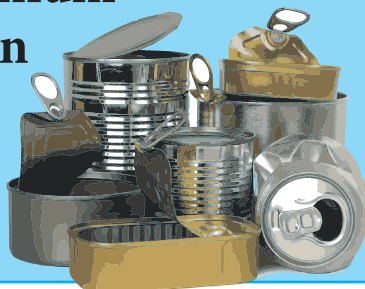


- Look for a 1, 2 or 5 symbol on the plastic
- Remove and discard all lids
- Rinse well and squash all items

Recycle household plastics like milk bottles, food or drink containers, meat trays (remove plastic wrap, rinse and recycle).

We cannot accept plastic types 3, 4, 6, and 7.

## Aluminium and Tin



Rinse well and squash all items

Recycle aluminium drink cans, plates and trays, food tins.

We cannot accept solvent cans, paint tins, aerosol cans, tin foil, or any kind of scrap metal.

## Glass



Remove and discard all lids and bottle caps  
Rinse bottles and food jars thoroughly

Recycle clear, brown, and green glass that has had food or drink in it.

We do not accept light bulbs, drinking glass, window glass, broken glass, ceramics, or porcelain.

## Paper and Cardboard



Flatten cardboard

Stack neatly, secure, and place inside/next to your recycling bin.

Recycle clean egg cartons, cardboard boxes, newspaper, and plain paper. Paper and cardboard recycling that is the same volume as the recycling bin will be accepted.

**IMPORTANT:** Place recycling bin on the kerbside by 7am on the day of collection. Monday collection is taking place for Piopio, Mōkau and Awakino. Tuesday collection is taking place for the Waitomo ward and village. Te Kūiti's collection takes place on Thursday and Friday, please check online. We do not accept contaminated recycling bins, non-recyclable items, overfilled bins, non-WDC containers, or commercial volumes of recycling. Large volumes of recycling must be disposed of by the occupier at the Landfill or Transfer Station themselves. The occupier is responsible for any waste not collected because of non-compliance with WDC's Solid Waste Bylaw. Any recyclables must be removed back to the occupier's premises by the evening of collection day, and alternative arrangements for disposal shall be made by the occupier as soon as practicable.

